

## Backflow flaps

HDPE backflow flaps



A backflow flap consists mainly of a plate which is provided with a hinge at the top side. Suspended in front of a culvert it forms an one-sided sealing. Water coming from the back is able to push open the flap and so to follow its path. If the water comes from the front side, the flap is pressed against the 'house' and the passage is closed. Because HDPE has buoyancy, this is weighted at the bottom.



Typ: KRK-R-O

Due to the material the backflow flap has a low weight. The low opening pressure of the flap even allows with low water level differences a water flow. On request, the ballast weight can be easily adapted. For all flap types the starting point is important that the construction has a hydraulic resistance as low as possible. With exception of the flat wall construction the flap cover is designed with an inclination angle of 15°. This grants a well sealing, even when the flap is assemble slightly inclined forward.

### Used materials

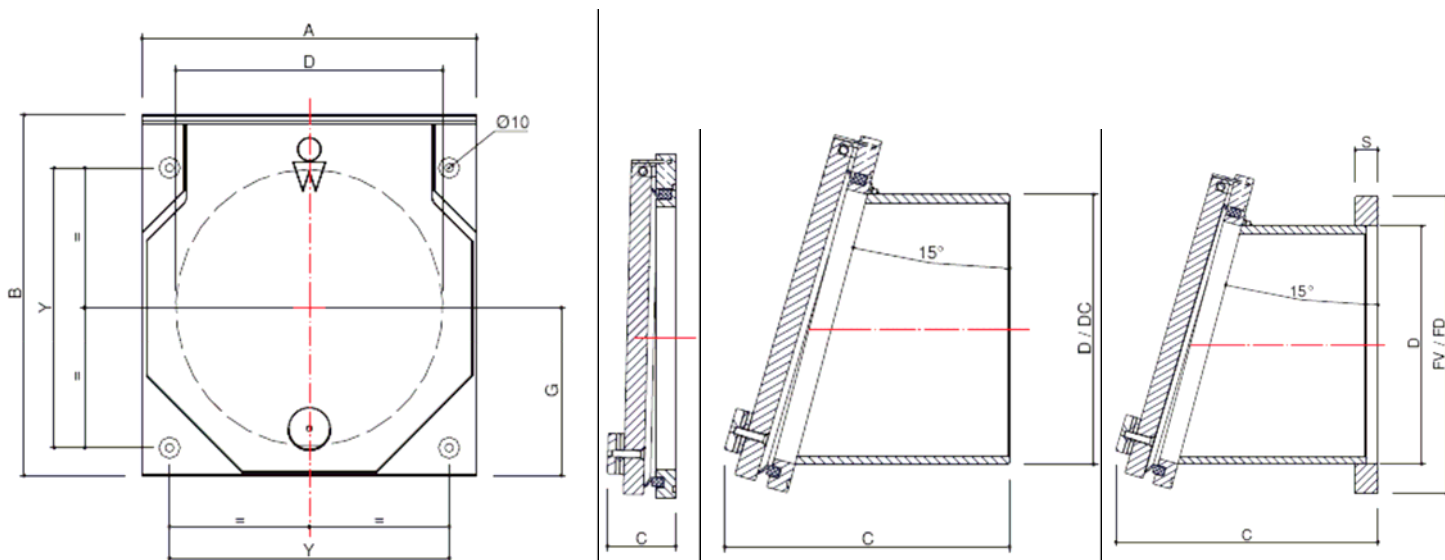
Flap plate	: HDPE
Back plate	: HDPE
Axle- and ballast weight:	: Stainless steel 316
Sealing	: EPDM-rubber

### Specifications

Dimensions:	Ø 100 mm bis Ø 500,
Operating pressure	Max. 5 m/Ws
Inclination angle Flat wall assembly	15° Standard, Exception
Higher pressure loads or dimensions on demand. Various connectivity options such as: PVC/HDPE pipe, flange, wall, concrete, HelCor pipe	

## Backflow flaps

HDPE backflow flaps



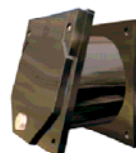
KRK-R-O



KRK-R-P



KRK-R-BS



KRK-R-OH



KRK-R-F

NW	D	A	B	Typ O		Typ P		Typ BS			Typ OH / F				G	Y	
				C	C	C	C	C	C	DC	C	C	FV	FD			S
mm	mm	mm	mm	mm	mm	mm	mm	mm	mm	mm	mm	mm	mm	mm	mm	mm	mm
					open		open		open								
100	110	190	220	75	230	225	345	-	-	-	235	355	190	220	20	95	150
125	125	205	235	75	245	225	355	-	-	-	235	365	205	220	20	102,5	155
150	160	240	270	75	280	225	380	-	-	-	235	390	240	285	20	120	180
200	200	280	310	75	315	325	510	-	-	-	340	525	280	340	30	140	230
250	250	330	360	80	360	330	545	-	-	-	345	560	330	395	30	165	280
300	315	395	425	85	425	335	595	585	845	290	350	610	395	445	30	197,5	330
400	400	480	510	95	510	400	710	595	910	390	410	725	480	565	30	240	420
500	500	580	610	105	600	400	785	605	985	490	420	800	580	670	30	290	520

Larger diameter on demand.

## Water regulating components



In addition to the backflow flaps we can also offer further water regulating components such as:

- Back pressure valve (operating pressure: 3m/Ws, 5m/Ws, 10m/Ws)
- Gate valve
- Spindle gate
- Overflow weirs

If you have question, please don't hesitate to contact us.